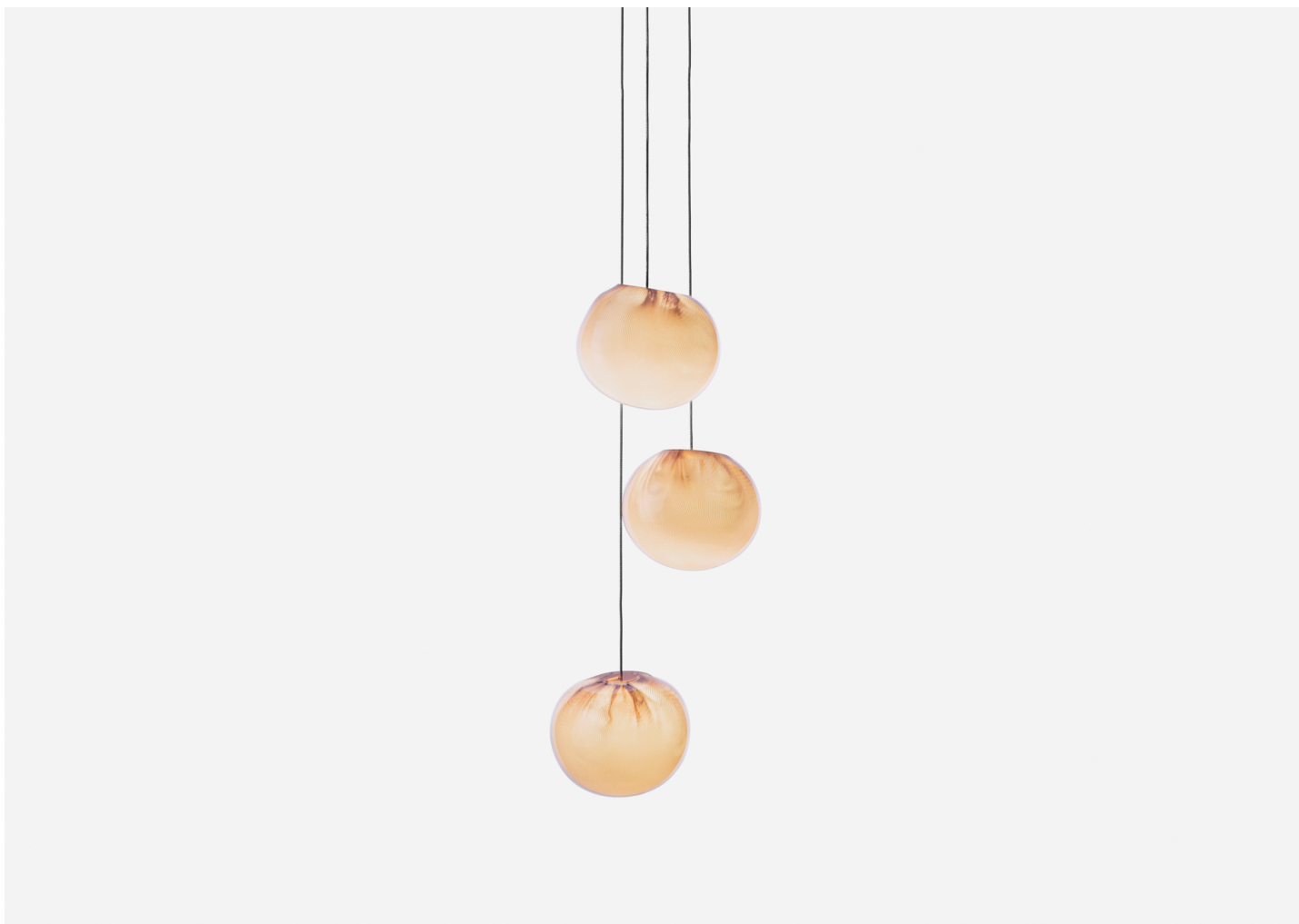


84.3 CLUSTER COLUMN

BOCCI



MANUFACTURER

Bocci

ORIGIN

Canada

PRODUCTION

Made to Order

WEIGHT

13.5 lbs.

CERTIFICATIONS

UL, CB, CE, UKCA, RCM.

DISCLAIMER

LED lamping is not dimmable.

MATERIALS

Blown glass, copper mesh, braided metal coaxial cable, electrical components, white canopy.

DIMENSIONS

Canopy: Dia. 6" x H 1.3"

Fixture: Dia. 8.7"

Overall Height: Site adjustable up to 10' (Up to 100' for custom fixtures.)

ILLUMINATION

1.5W LED or 10W Xenon.

SUSPENSION

Standard suspension is site adjustable up to 10' or 20', and up to 100' for custom fixtures.

CANOPY

Dia. 6" x H 1.3"