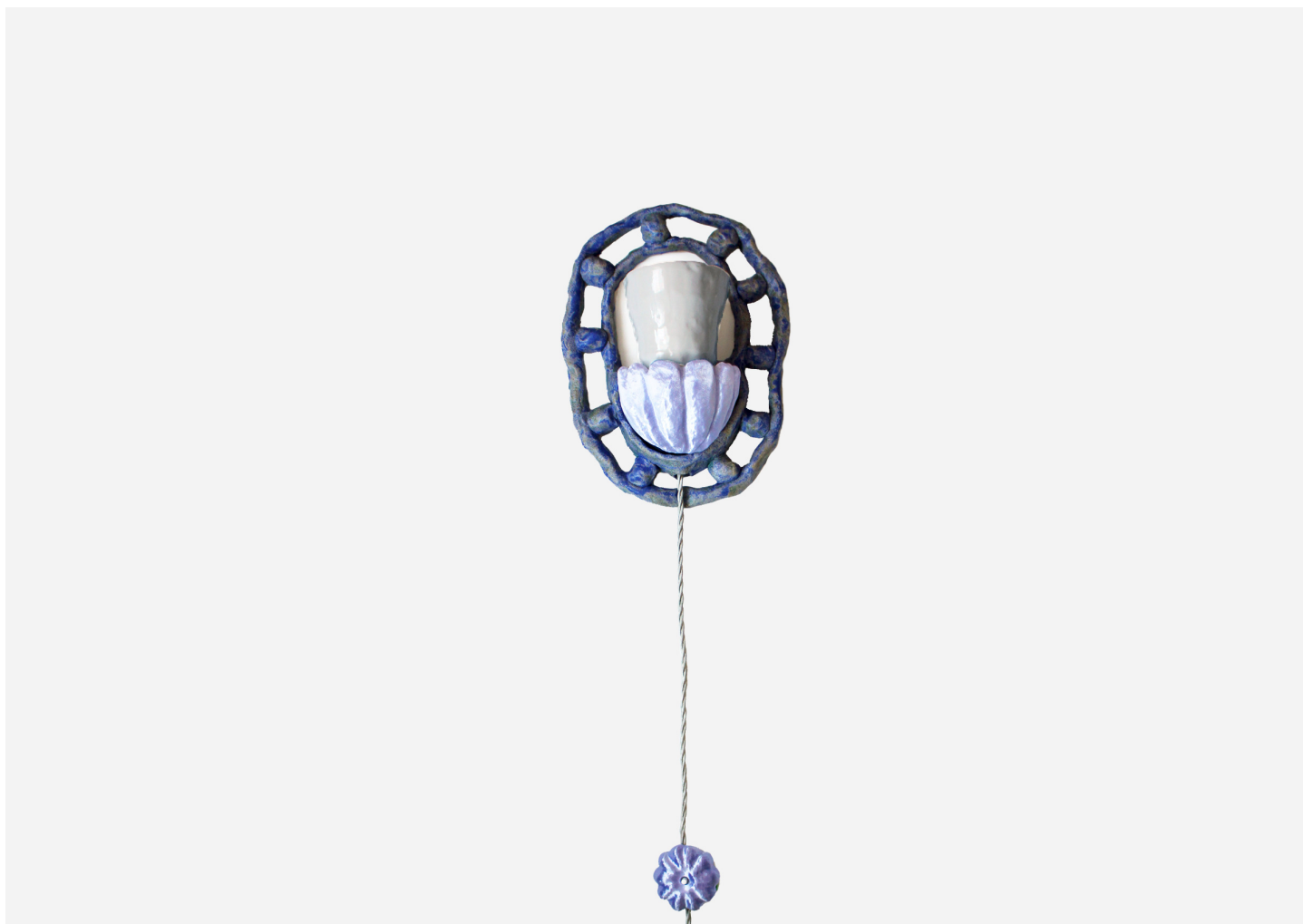


# BUBBLE ARCH LILAC SCONCE 2

NATALIA TRIANTAFYLLI



## DESIGNER

Natalia Triantafylli

## ORIGIN

United Kingdom

## PRODUCTION

One of a Kind

## DATE

2024

## MATERIALS

Stoneware, Parian Porcelain Shade & 3D Printed PLA.

## DIMENSIONS

L 7.1" x W 7.1" x H 11.8"

## ILLUMINATION

110v LED E14, golf shape bulb required. Bulb not included.