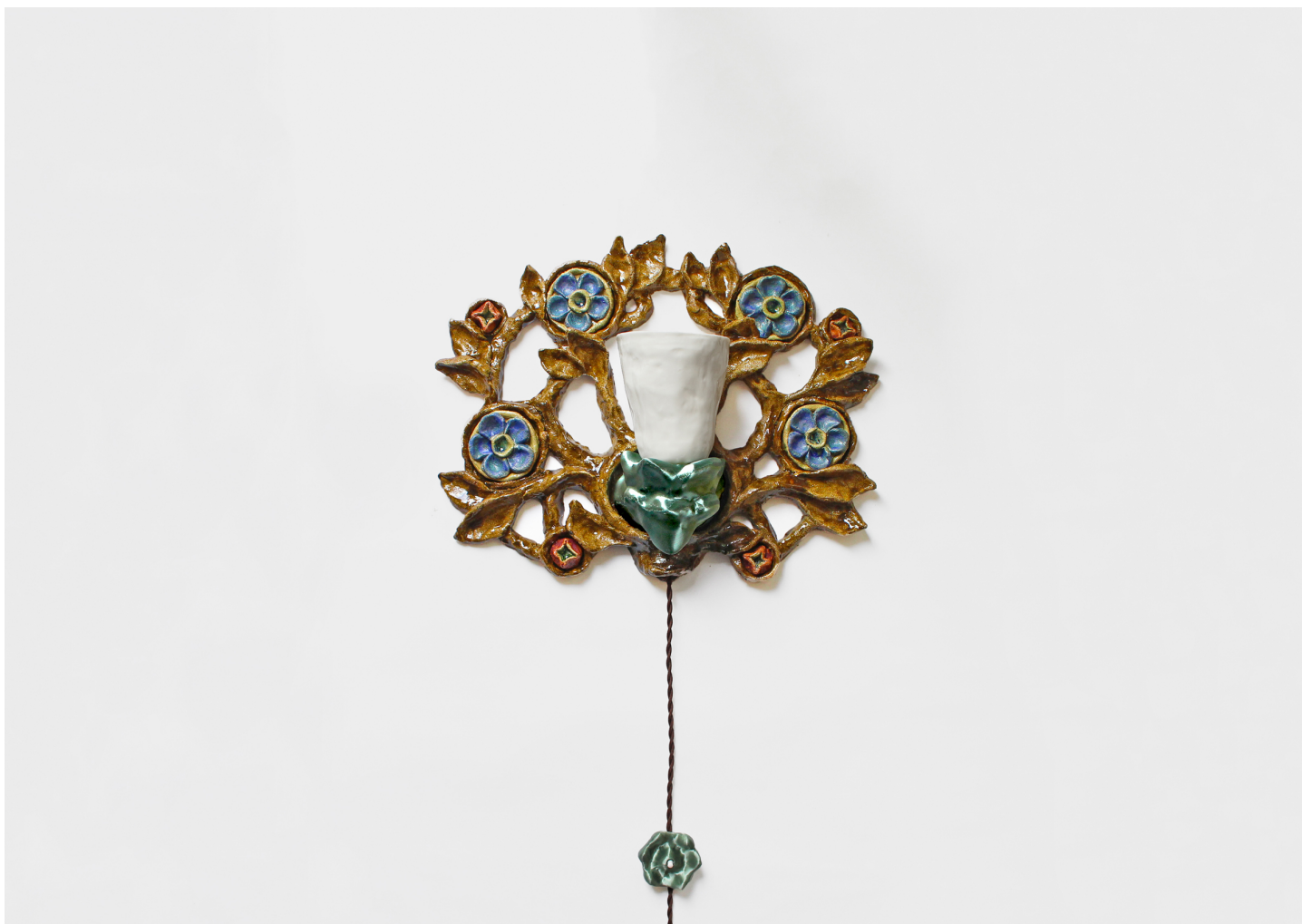


FLOWER POT SCONCE WITH POMEGRANATES

NATALIA TRIANTAFYLLI



DESIGNER
Natalia Triantafylli

ORIGIN
United Kingdom

PRODUCTION
One of a Kind

DATE
2023

DISCLAIMER
This lamp is equipped with a standard US electrical plug.

MATERIALS
Stoneware, Parian Porcelain, 3D Printed PLA.

DIMENSIONS
L 14" x D 6.3" x H 13.5"

ILLUMINATION
e14 LED Bulb Required.