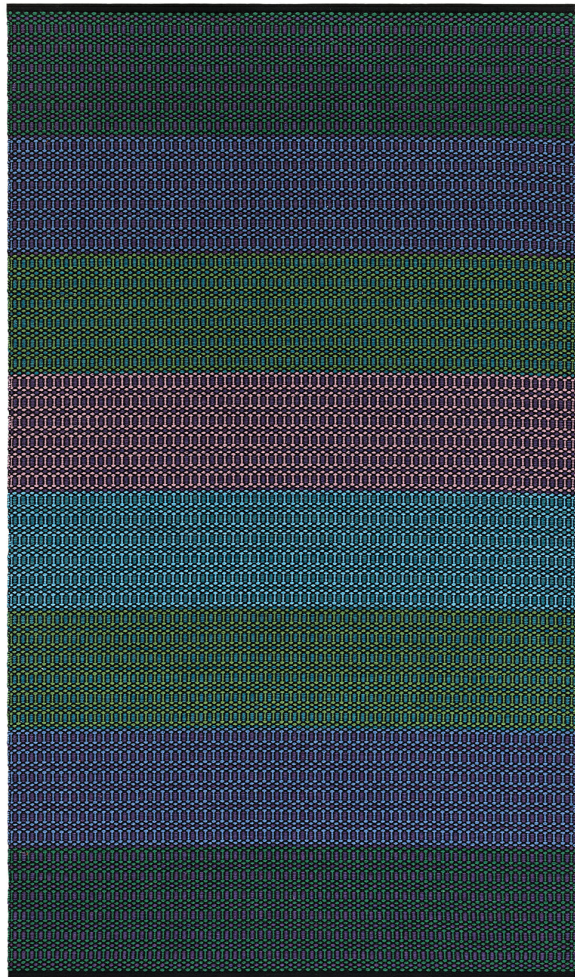


# MUSE BOTANICA 200

MAJA JOHANSSON STARANDER FOR KASTHALL



DESIGNER  
Maja Johansson Starander

MANUFACTURER  
Kasthall

ORIGIN  
Sweden

PRODUCTION  
Made to Order

MATERIALS  
Warp Material: 100% linen. Weft Material: 100% wool.

DIMENSIONS  
Standard sizes:

33.5" x 96.5"

53" x 76.75"

65" x 96.5"

76.75" x 114"

98.5" x 132"

118" x 153.5"

134" x 177"

CUSTOMIZABLE  
CUSTOM SIZES AVAILABLE UPON REQUEST.