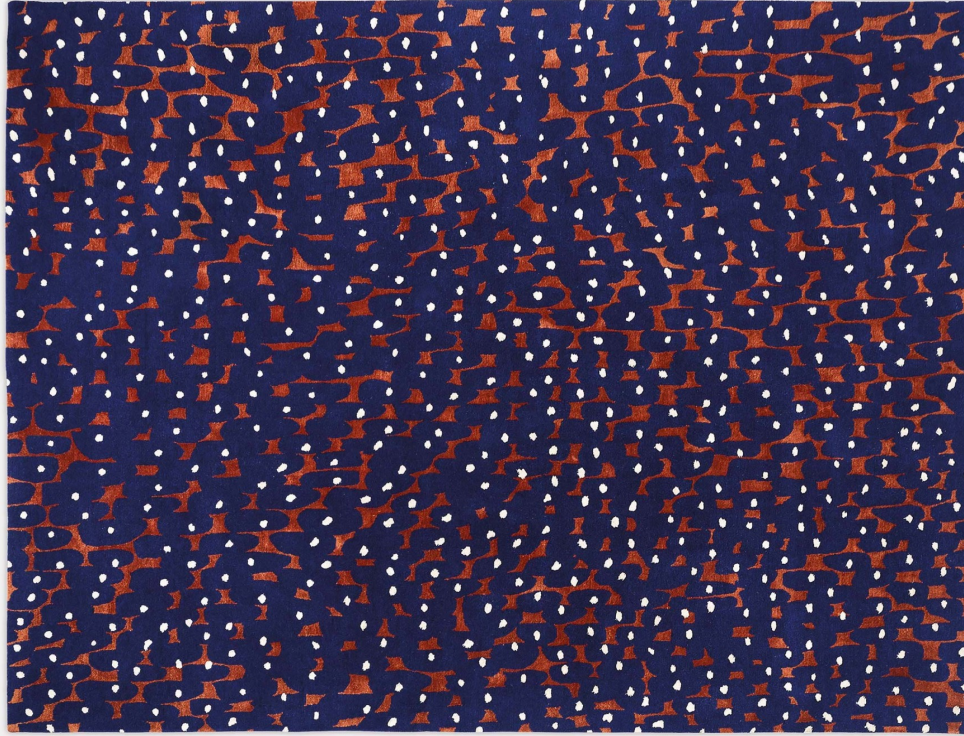


NUEZE RUG

ATELIER FÉVRIER



MANUFACTURER
Atelier Février

ORIGIN
Nepal

PRODUCTION
Made to Order

MATERIALS
80% Himalayan Wool, 20% Silk. 125 knots.

DIMENSIONS
Customized to order per project dimensions.

CUSTOMIZABLE
Atelier Février specializes in crafting unique, made-to-order rugs tailored to your specific preferences. The dimensions, shape, and color of the rug can be customized to suit your needs.

CARE
To ensure your rug stays in pristine condition, consider an anti-stain treatment. In the event of spills or stains, it's recommended to entrust a professional cleaner rather than cleaning it yourself. This will help maintain the rug's quality and extend its lifespan.