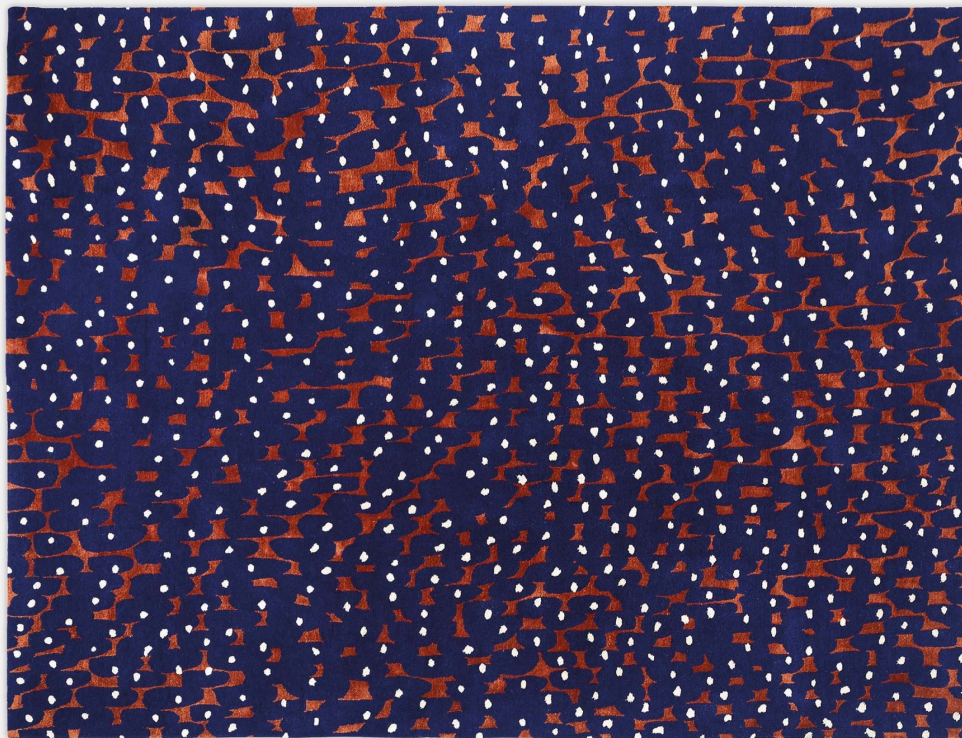


NUEZE RUG

ATELIER FÉVRIER



MANUFACTURER
Atelier Février

ORIGIN
Nepal

PRODUCTION
Made to Order

MATERIALS
80% Himalayan wool, 20% silk. Hand-knotted. 125 knots, 200,000 knots/m².

DIMENSIONS
Customized to order per project dimensions.

CUSTOMIZABLE
Atelier Février creates bespoke rugs, each made to order. Dimensions, shape, and color are completely customizable. Please inquire directly for more information.

CARE
Anti-stain treatments are always a great way in ensuring your rug is well protected before introducing it to your space. Your local rug specialist should be able to provide suitable options designed just for you. In case of any spill or stain you need to take your rug for a professional cleaner. Do not try to clean the rug yourself.