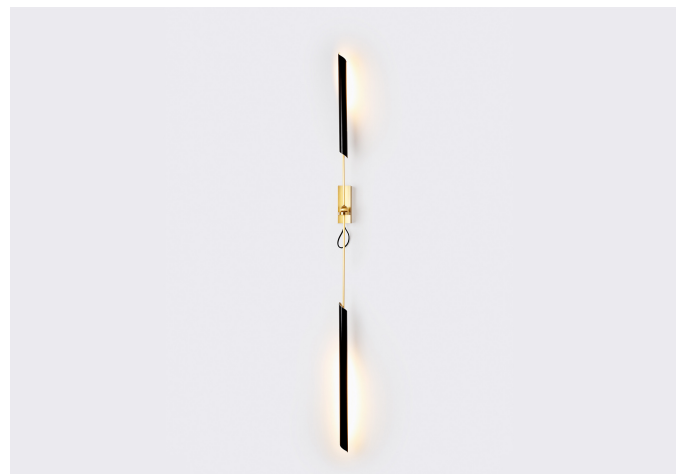


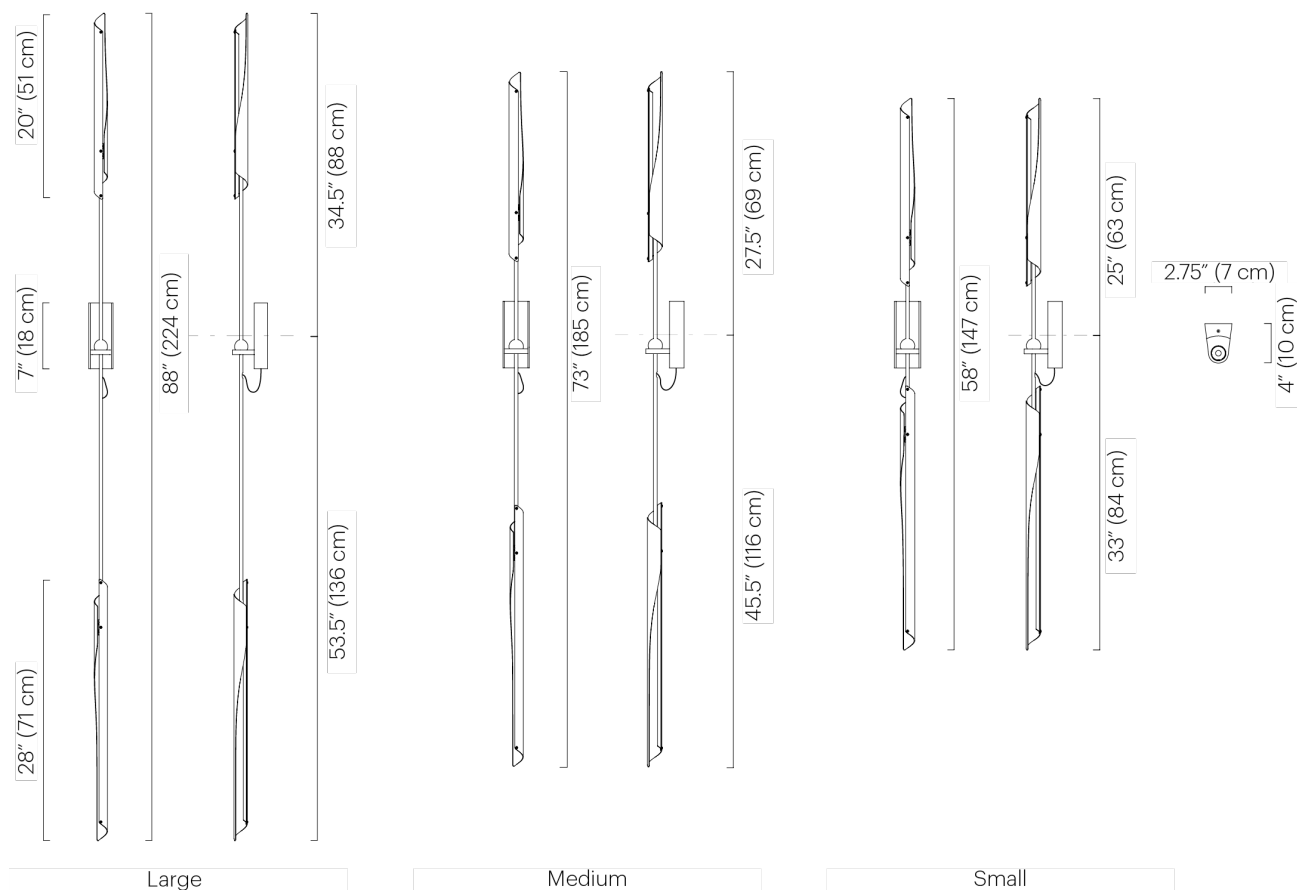
# OTTO TORCH NO. 215

DAVID WEEKS



# OTTO TORCH NO. 215

DAVID WEEKS



## DESIGNER

David Weeks

## ORIGIN

Made in the United States.

## PRODUCTION

Made to Order

## WEIGHT

10lbs

## DISCLAIMER

ADA compliant depth. Hardwired is standard. Indoor use and dry locations only. Wall mount designed to fit 2" x 4" vertical switch box only.

## MATERIALS/FINISHES

Powder coated aluminium shade, Plated brass wall mount, Plated brass frame, Plated and polished brass hardware.

Shade in Black Satin (ivory satin interior), Grey Gloss (ivory satin interior), Ivory Satin (ivory satin interior).

Hardware in Brushed Brass and Polished Nickel. Hardware finish consistent with frame finish.

## DIMENSIONS

Large: D 4" x W 2.75" x H 88"

Medium: D 4" x W 2.75" x H 73"

Small: D 4" x W 2.75" x H 58"

Bracket: D 4" x W 2.75" x H 7"

Top shade: Dia. 1.5" x L 20"

Bottom shade: Dia. 1.5" x L 28"

## ILLUMINATION

Warm white 2700K LED, 1340 Lumens (equivalent to two 60W incandescent bulbs), CRI 80+, LED power source 40W/24V phase dimmable class 2, 50,000 LED life hours.

120V Power Supply: included in wall mount. 220-240V Power Supply: remote power supply only. Not included.