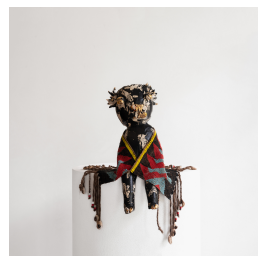
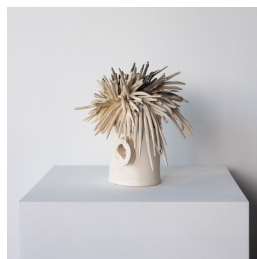
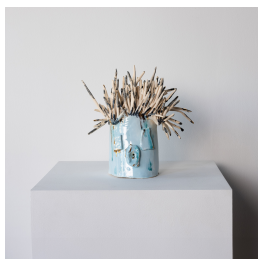


# LEENA SIMILU

Working in clay-based sculpture, Leena Similu (b. London, UK) considers identity as multifaceted and intertwining modes—namely, one of personal history and origin, and another of the expansive experience of motherhood. Replete with a sense of formal play and conceptual depth, her works are closely influenced by her West African heritage and echo the complexities of living within multiple cultures in a Eurocentric society. As a material, the enduring nature of clay lends itself to Similu's interest in temporality, suggesting an exploratory dialogue between past, present, and future.



## A 5x5 grid of 25 contemporary African masks, each displayed on a white pedestal against a neutral background. The masks are diverse in material, color, and form, representing various African cultures and artistic styles. The first row includes a mask with a white base and black and gold patterns, a mask with a white base and black and gold patterns, a green mask with a gold crown, a mask with a white base and black and gold patterns, and a mask with a white base and black and gold patterns. The second row includes a mask with a white base and black and gold patterns, a mask with a white base and black and gold patterns, a mask with a white base and black and gold patterns, a mask with a white base and black and gold patterns, and a mask with a white base and black and gold patterns. The third row includes a mask with a white base and black and gold patterns, a mask with a white base and black and gold patterns, a mask with a white base and black and gold patterns, a mask with a white base and black and gold patterns, and a mask with a white base and black and gold patterns. The fourth row includes a mask with a white base and black and gold patterns, a mask with a white base and black and gold patterns, a mask with a white base and black and gold patterns, a mask with a white base and black and gold patterns, and a mask with a white base and black and gold patterns. The fifth row includes a mask with a white base and black and gold patterns, a mask with a white base and black and gold patterns, a mask with a white base and black and gold patterns, a mask with a white base and black and gold patterns, and a mask with a white base and black and gold patterns.



# LEENA SIMILU

## Exhibitions

- 2024 "Design Miami" – The Future Perfect, Miami, FL
- 2024 "Who will build the ark" – Carlye Packer, Los Angeles, CA
- 2024 "Design Miami Los Angeles" – The Future Perfect, Los Angeles, CA
- 2023 "False Flags" – Royal Society of Sculptors, London, UK
- 2023 "Staring at the Sun" – The Pit, Palm Springs, CA
- 2023 "Terra Recognita" – Mariane Ibrahim, Chicago, IL
- 2023 "We Outta Here" – The Pit, Los Angeles, CA
- 2021 "Launch of the Goldwyn House" – The Future Perfect, Los Angeles, CA
- 2022 "Juggernaut" – The Pit, Los Angeles, CA
- 2022 "Light up the sky" – The Pit, Los Angeles, CA

## Solo Exhibitions

- 2025 "Nyanga" – The Future Perfect, San Francisco, CA
- 2023 "Superfantastic" – Mariane Ibrahim, Paris, FR
- 2022 "A.K.A." – The Pit, Los Angeles, CA
- 2022 "The Watchers" – Emma Gray HQ, Los Angeles, CA
- 2021 "Elephant" – Fourteen30 Contemporary, Los Angeles, CA

## Fairs

- 2024 "Design Miami" – The Future Perfect, Miami, FL
- 2024 "Felix" – Carlye Packer, Los Angeles, CA
- 2023 "Intersect" – The Pit, Palm Springs, CA
- 2023 "New Art Dealers Alliance" – The Pit, Miami, FL
- 2023 "Design Miami" – The Future Perfect, Miami, FL
- 2022 "Frieze" – Sized Ltd., Los Angeles, CA
- 2022 "New Art Dealers Alliance" – Emma Gray HQ, New York, NY
- 2022 "Design Miami" – The Future Perfect, Miami, FL

## Residencies

- 2024 ILY2 – Portland, OR