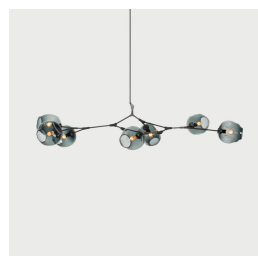
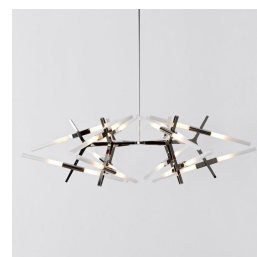
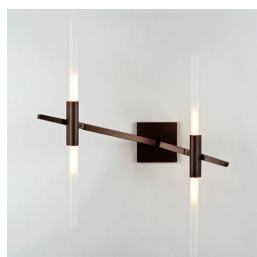
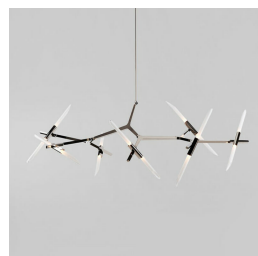
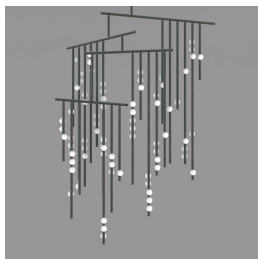
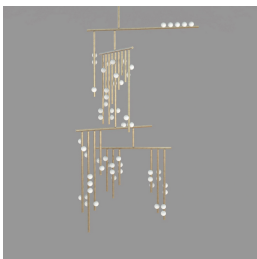
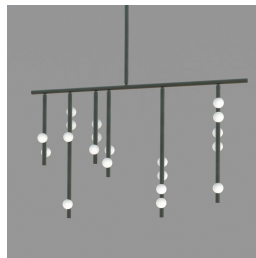
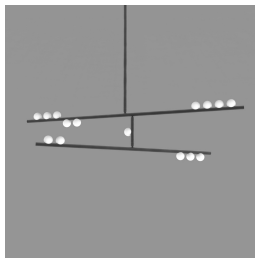
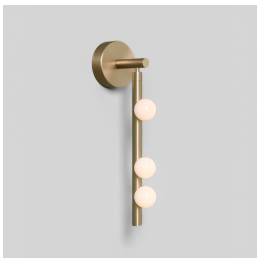
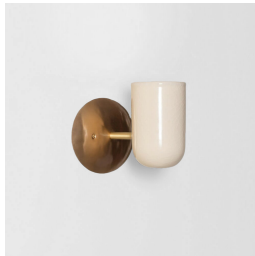
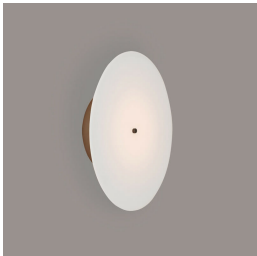
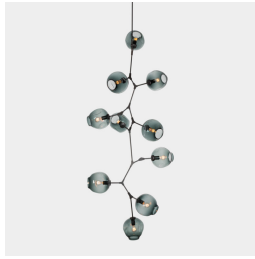
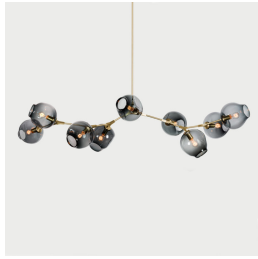


# LINDSEY ADELMAN

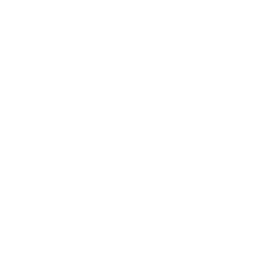
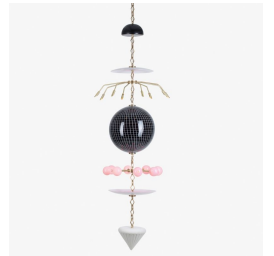
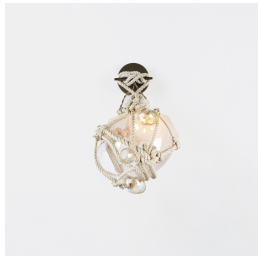
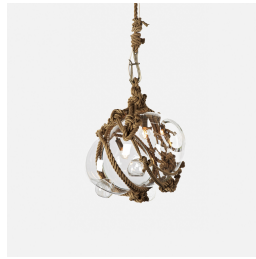
Lindsey Adelman is an American lighting designer and artist, based in New York City. Her one-of-a-kind fixtures - known for their pop sensibility and use of raw materials - are at once playful and functional; industrial and romantic. Signature pieces include her vine-like fringed wall lights, and her seminal branching blown glass "Bubble" chandeliers.



# LINDSEY ADELMAN



# LINDSEY ADELMAN



# LINDSEY ADELMAN

## Exhibitions

- 2022 "Launch of the Goldwyn House" – The Future Perfect, Los Angeles, CA
- 2019 "Launch of Casa Perfect New York" – The Future Perfect, New York, NY
- 2018 "Launch of The Complex" – The Future Perfect, San Francisco, CA
- 2016 "Ambrosia" – The Future Perfect, New York, NY