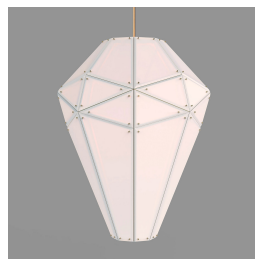
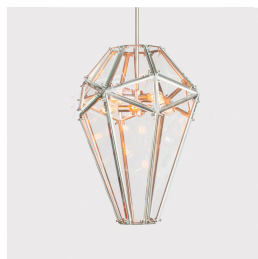
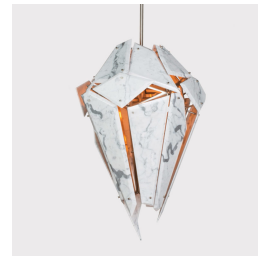
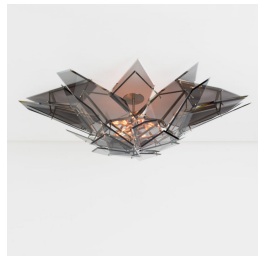


MARY WALLIS

Mary Wallis is an Australian born, New York City based lighting designer who draws on expertise in broader fields to produce pieces that are on the cutting edge of the design world. With an obsession for transforming the broken and unfinished into items of beauty and function, Wallis pushes the boundaries of avant-garde design and pragmatic, superior craftsmanship.



MARY WALLIS

