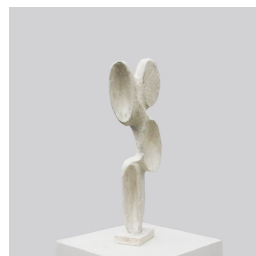
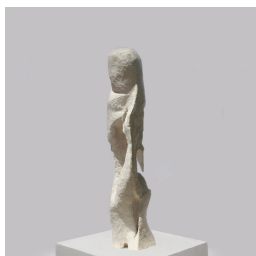
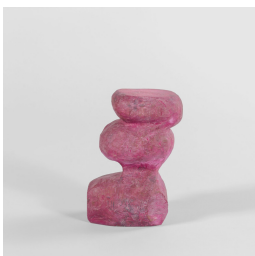
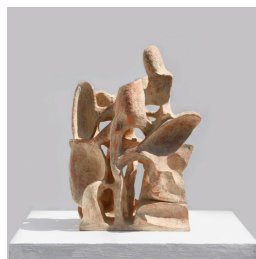
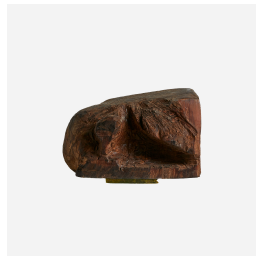


RYOSUKE YAZAKI

Ryosuke Yazaki is a Japanese sculptor. Grandson of the renowned sculptor Torao Yazaki, the younger Yazaki is himself considered a master carver as well. His work is renowned within both the art and design worlds; in both Japan and the West.

Born in Tokyo in 1965, Yazaki began his education studying art at Japan's Nihon University before pursuing further education in the United Kingdom. Evoking the work of seminal sculptors such as Henry Moore, Barbara Hepworth and Isamu Noguchi, Yazaki's often-diminutive works convey a sense of mysterious magnetism. Switching between clay, terracotta and wood, he is particularly drawn to Japanese materials like the fragrant Hinoki and Camphor woods.



A 5x5 grid of 25 abstract sculptures by Henry Moore. The sculptures are arranged in five rows and five columns. The materials and colors vary, including yellow, blue, red, brown, and white. The forms are abstract, often featuring organic, rounded shapes and geometric elements. Some sculptures are solid, while others are hollow or have cutouts. The background is a neutral, light gray, and the sculptures are placed on a white surface. The lighting is soft, highlighting the textures and forms of the sculptures. The grid is as follows:
Row 1: Yellow abstract sculpture, Blue abstract sculpture, Red abstract sculpture, Brown abstract sculpture, Brown abstract sculpture.
Row 2: Brown abstract sculpture, White abstract sculpture, Blue abstract sculpture, White abstract sculpture, Blue abstract sculpture.
Row 3: Brown abstract sculpture, White abstract sculpture, Yellow abstract sculpture, White abstract sculpture, Blue abstract sculpture.
Row 4: White abstract sculpture, Orange abstract sculpture, White abstract sculpture, Red abstract sculpture, White abstract sculpture.
Row 5: White abstract sculpture, Orange abstract sculpture, Red abstract sculpture, White abstract sculpture, Red abstract sculpture.
Row 6: White abstract sculpture, Orange abstract sculpture, Red abstract sculpture, White abstract sculpture, Red abstract sculpture.
Row 7: White abstract sculpture, Orange abstract sculpture, Red abstract sculpture, White abstract sculpture, Red abstract sculpture.
Row 8: White abstract sculpture, Orange abstract sculpture, Red abstract sculpture, White abstract sculpture, Red abstract sculpture.
Row 9: White abstract sculpture, Orange abstract sculpture, Red abstract sculpture, White abstract sculpture, Red abstract sculpture.
Row 10: White abstract sculpture, Orange abstract sculpture, Red abstract sculpture, White abstract sculpture, Red abstract sculpture.

RYOSUKE YAZAKI

