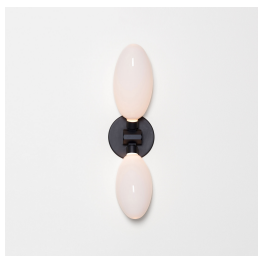
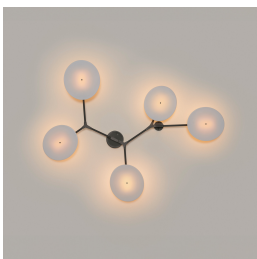
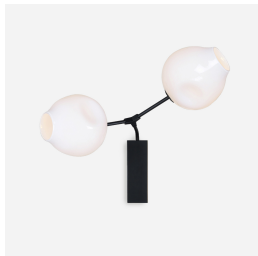
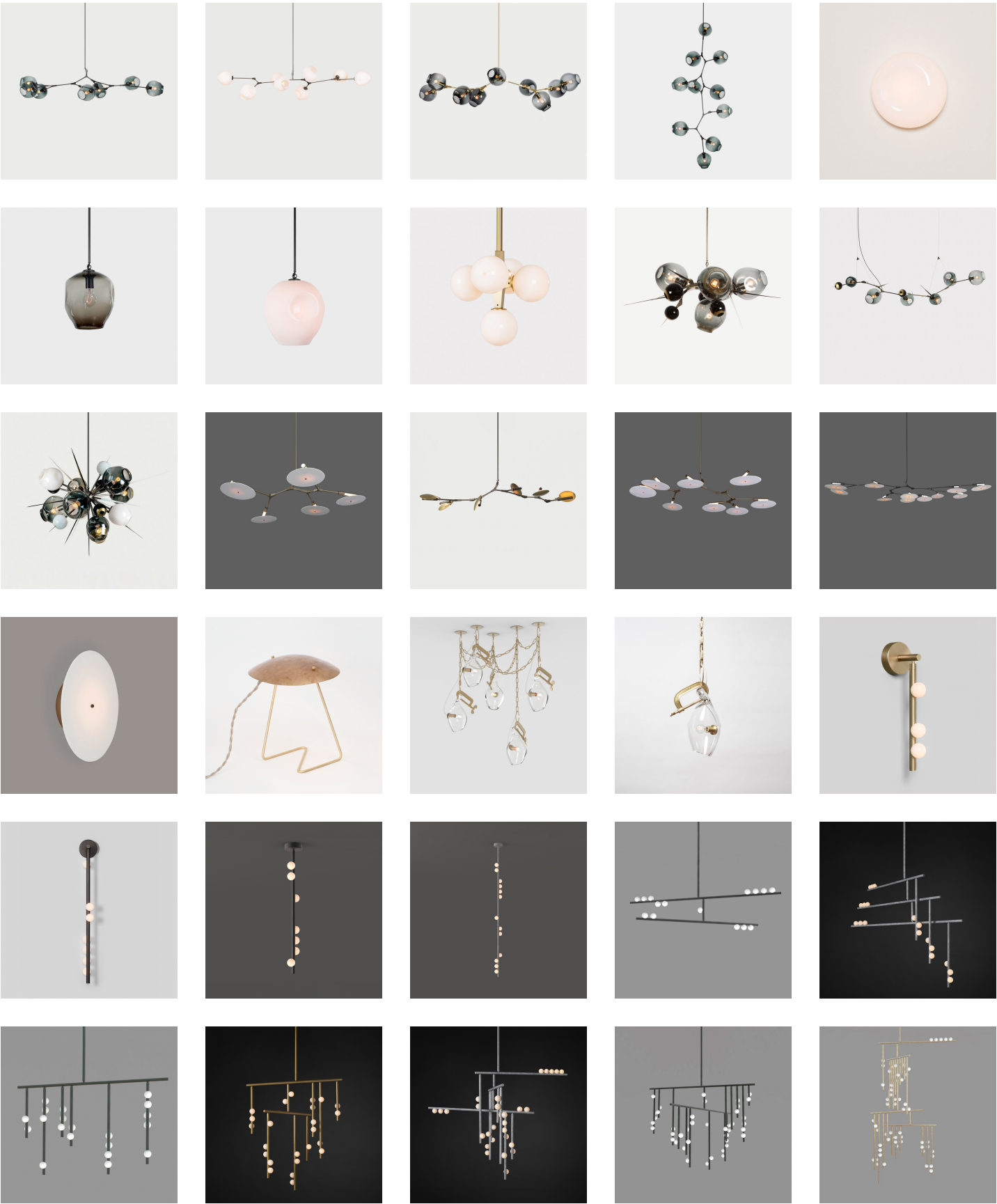


# LINDSEY ADELMAN STUDIO

Lindsey Adelman has long been obsessed with illumination in all its forms. Her work treads the porous border between sculpture and design, taking inspiration from such diverse sources as the paintings of Piet Mondrian, an elegiac passage from Camus's "The Fall" and the spidery brilliance of Giacometti. Ever since the debut of the Branching Bubbles chandelier, the first product made in her newly opened studio in 2006, her goal has been to transform the ephemeral nature of light into something not merely tangible but enduring. Combining organic, handwrought materials like blown glass with the strong industrial beauty of machine-milled components, her lighting systems create radiant warmth while underscoring the drama of shadows and emptiness.



LINDSEY ADELMAN STUDIO



# LINDSEY ADELMAN STUDIO

